

BECOME A STRAND MEMBER TODAY! VISIT ROCKLANDSTRAND.COM

# MAY 2024



**STRAND  
THEATRE**  
ROCKLAND MAINE

**Film Tickets: \$7/STRAND Members • \$8/Seniors, Students, Matinees • \$9/ Adults** Purchase movie tickets at our box office 30 minutes prior to each showtime.

**Live event and select show tickets:** Purchase in advance online at [RocklandStrand.com](http://RocklandStrand.com); at the box office when the theater is open for shows; by phone - 207-594-0070 (Phone line staffed Tue.-Fri. 2:30 - 4:30pm; we will return messages left outside of those hours)

		<b>WED 1</b> <b>LIVE:</b> AMYTHYST KIAH  7:30		<b>THU 2</b> <b>FILM:</b> LA CHIMERA  1:00 7:00		<b>FRI 3</b> <b>FILM:</b> HARD MILES 5:30  <b>FILM:</b> INDIGO GIRLS: IT'S ONLY LIFE AFTER ALL 5:30 <b>FILM:</b> HARD MILES 8:00		<b>SAT 4</b> <b>FILM:</b> INDIGO GIRLS: IT'S ONLY LIFE AFTER ALL 5:30 <b>FILM:</b> HARD MILES 8:00					
<b>SUN 5</b> <b>FILM:</b> INDIGO GIRLS: IT'S ONLY LIFE AFTER ALL 3:00 <b>FILM:</b> HARD MILES 5:30		<b>MON 6</b> <b>CLOSED</b>		<b>TUE 7</b> <b>FILM:</b> HARD MILES  1:00 7:00		<b>WED 8</b> <b>COMMUNITY:</b> CHILDHOOD 2.0 <i>at OMS</i> 6:00 <b>FILM:</b> HARD MILES 7:00		<b>THU 9</b> <b>NT LIVE:</b> THE MOTIVE AND THE CUE 2:00 7:00		<b>FRI 10</b> <b>FILM:</b> WE GROWN NOW 5:30 8:00		<b>SAT 11</b> <b>MET LIVE:</b> MADAMA BUTTERFLY 1:00  <b>FILM:</b> WE GROWN NOW 5:30, 8:00	
<b>SUN 12</b> <b>FILM:</b> WE GROWN NOW 3:00 5:30		<b>MON 13</b> <b>CLOSED</b>		<b>TUE 14</b> <b>FILM:</b> WE GROWN NOW  1:00 7:00		<b>WED 15</b> <b>FILM:</b> THE OLD OAK  7:00		<b>THU 16</b> <b>FILM:</b> THE OLD OAK 1:00  <b>FILM:</b> Jubilee Series INDIANA JONES AND THE TEMPLE OF DOOM (1984) 7:00		<b>FRI 17</b> <b>FILM:</b> REMEMBERING GENE WILDER 5:30  <b>FILM:</b> THE OLD OAK 8:00		<b>SAT 18</b> <b>LIVE:</b> FAMILY SERIES DIVE IN! - SOLD OUT <b>FILM:</b> THE OLD OAK 5:30 <b>FILM:</b> REMEMBERING GENE WILDER 8:00	
<b>SUN 19</b> <b>LIVE:</b> MAY ERLEWINE 7:30		<b>MON 20</b> <b>CLOSED</b>		<b>TUE 21</b> <b>MET ENCORE:</b> MADAMA BUTTERFLY 1:00  <b>FILM:</b> LATE NIGHT WITH THE DEVIL 7:00		<b>WED 22</b> <b>FILM:</b> LATE NIGHT WITH THE DEVIL  7:00		<b>THU 23</b> <b>LOCAL:</b> New Century Series <b>PUPPET WORKSHOP</b> BRINGING PUPPETS TO LIFE <i>at Steel House</i> 6:30		<b>FRI 24</b> <b>LIVE:</b> New Century Series <b>PUPPET SHOW</b> WHEN I PUT ON YOUR GLOVE <i>Ages 14 and up</i> 7:00		<b>SAT 25</b> <b>FILM:</b> Family Series SPIDERMAN: INTO THE SPIDERVERSE (2018) 3:00 <b>FILM:</b> EVIL DOES NOT EXIST 5:30 <b>FILM:</b> LATE NIGHT WITH THE DEVIL 8:00	
<b>SUN 26</b> <b>FILM:</b> Criterion Series MY DINNER WITH ANDRE (1981) 2:00 <b>FILM:</b> EVIL DOES NOT EXIST 5:30		<b>MON 27</b> <b>CLOSED</b>		<b>TUE 28</b> <b>FILM:</b> EVIL DOES NOT EXIST 1:00 7:00		<b>WED 29</b> <b>FILM:</b> EVIL DOES NOT EXIST 7:00		<b>THU 30</b> <b>FILM:</b> EVIL DOES NOT EXIST 1:00 7:00		<b>FRI 31</b> <b>FILM:</b> WILDCAT 5:30 8:00		<b>SAT 1</b> <b>FILM:</b> WILDCAT 5:30, 8:00	

# Find more info about these shows at [Rocklandstrand.com](http://Rocklandstrand.com)

SCREEN



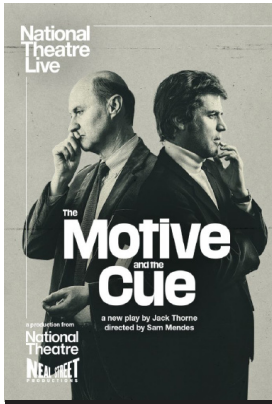
May 3-5



May 3-8



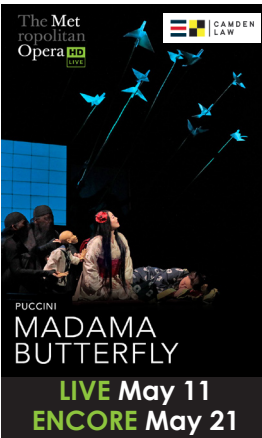
AT OCEANSIDE MIDDLE SCHOOL  
May 8



May 9 2pm & 7pm



May 10-14



LIVE May 11  
ENCORE May 21



May 15-18



40 Year Anniversary!  
May 16 7pm



May 17-18



May 21-25



May 25-30



May 25 at 1pm



May 26 at 2pm



May 31 - June 6



Friends of the Strand Theatre  
Presents  
**Rockland's STRAND**  
A Film by Dale Schierholt

**SHOW DATES & TIMES:**  
May 16 - Thu - 9pm  
May 18 - Sat - 2pm

Funding for this documentary is supported by Allen Insurance and Financial, Camden National Bank, CedarWorks, & Weatherend Estate Furniture

LIVE



**DIVE IN!**  
SOLD OUT  
AN IMMERSIVE, INTERACTIVE THEATRICAL EXPERIENCE.

May 18



**MAY ERLEWINE**  
"AS GOOD AS IT GETS AS A SONGWRITER AND ARTIST."  
- THEO KATZMAN

May 19



SPONSORS - VERMONT ARTS COUNCIL  
NEFA, THE ROCKLAND HARBOR HOTEL  
**Sandglass Theater** presents  
**BRINGING PUPPETS TO LIFE WORKSHOP**

May 23



Ages 14+  
SPONSORS - VERMONT ARTS COUNCIL  
NEFA, THE ROCKLAND HARBOR HOTEL  
**Sandglass Theater** presents  
**WHEN I PUT ON YOUR GLOVE PUPPET SHOW**

May 24

